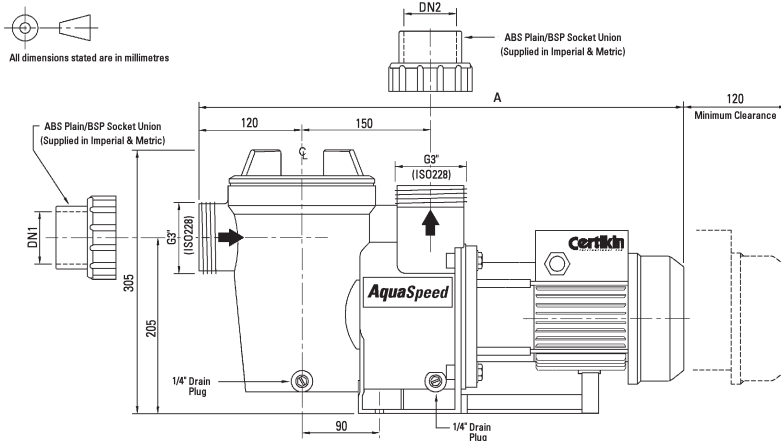
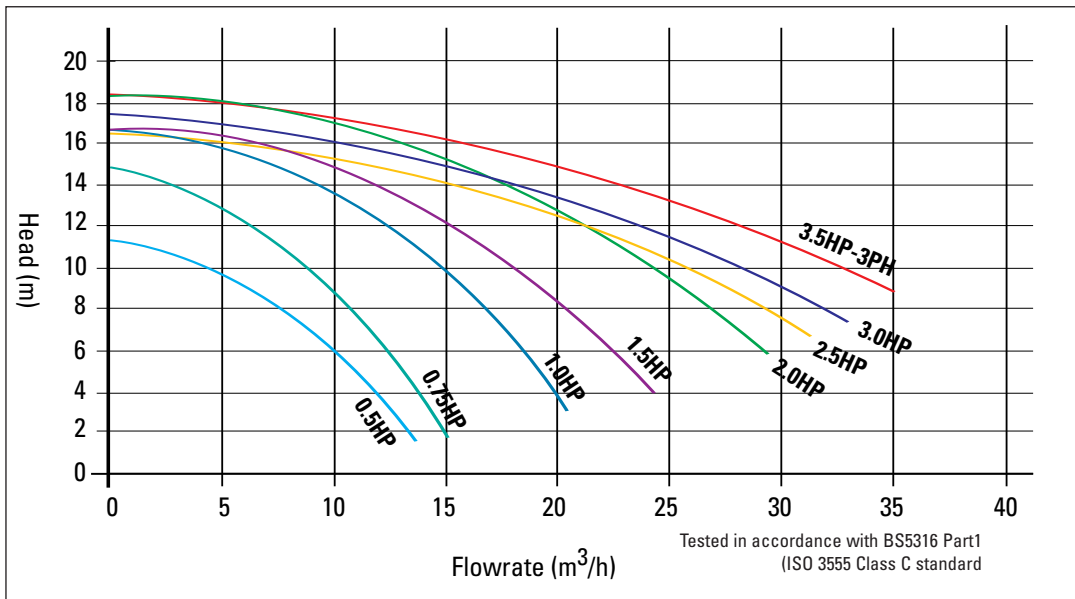
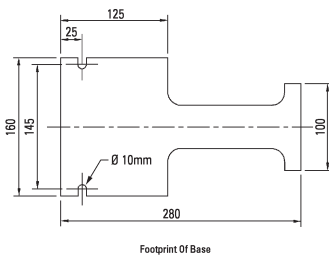


AQUASPEED PUMP CURVES



kW	HP	A (mm)	DN1	DN2
0.37	0.5	545	Supplied with 1.5" / 2" & 63mm adaptors	
0.56	0.75	545		
0.75	1.0	565	Supplied with 2" & 63mm adaptors	
1.1	1.5	565		
1.5	2.0	610	Supplied with 2" & 63mm adaptors	
1.9	2.5	610		
2.2	3.0	610		
2.6	3.5	610		



SPECIFICATIONS

- Voltage - 50hz Single phase 240v 2850 rpm
Three phase 240 / 415v 2850 rpm
- Motor - IP55 totally enclosed fan cooled motor and fully CE approved. Class F insulation and fitted with thermal protection. 316 grade stainless steel shaft
- 1 year warranty
- Supplied with approximately 1.5 metres pre-wired cable (single phase only)
- Maximum water temperature +50°C
- Carton Size - 68cm (L) x 29cm (W) x 35cm (H)
- Volume - 0.07m³

kW	HP	Single Phase		Three Phase		Weight (kg)
		Start up (amps)	Running (amps)	Start up (amps)	Running (amps)	
0.37	0.5	6.5	1.5	-	-	13
0.56	0.75	7.9	3.2	1.5	1.1	14
0.75	1.0	10.5	3.5	1.7	1.5	16
1.1	1.5	11.0	4.0	1.9	1.7	17
1.5	2.0	11.6	6.0	2.5	2.1	20.5
1.9	2.5	12.6	6.3	2.6	2.1	20.5
2.2	3.0	14.1	7.5	3.0	2.5	20.5
2.6	3.5	-	-	3.8	3.6	21

If you should require further technical information please do not hesitate to contact us.



Certikin
international ltd

AquaSpeed

FEATURES

- A single pump range covering all sizes from 1/2 HP to 3 1/2HP
- Designed for maximum flow characteristics

- Whisper quiet operation
- Large capacity strainer basket
- High pressure screw fit lid
- TEFC motor IP55 rated and fully CE approved
- Supplied with quick coupling unions



The Certikin Aquaspeed is suitable for both pool and spa filtration applications. Completely self priming it is available in a wide range of sizes from 0.5HP to 3.5HP (in both single and three phase versions).

The large capacity strainer basket has a high-pressure clear screw on lid to make for ease of service and inspection.

A 2 speed 1.5HP (1.1kW) single phase version is also available.

Suitable for use in salt-water pools.

Ultimately the only pump you will ever need!